



# Appendix A

Figures – Package 7

Figure Number	Figure Title	Number of Sheets	Package
<b>Introduction</b>			
Figure 1-2	Project Overview	3	1
<b>Legislative and Policy Context</b>			
Figure 2-1	Local Authorities	3	1
<b>Project Description</b>			
Figure 4-1	Project Design	2	1
Figure 4-7	Sunbury Weir Preferred Design	1	1
Figure 4-8	Molesey Weir Preferred Design	1	1
Figure 4-9	Teddington Weir Preferred Design	1	1
<b>Air Quality</b>			
Figure 6-1	Air Quality Study Areas	1	1
Figure 6-2	Air Quality Management Areas	1	1
Figure 6-3	Mean NO2 Results	1	1
Figure 6-4	Mean NO2 Concentrations from UK AIR Maps	1	1
Figure 6-5	PM <sub>10</sub> Concentrations	1	1

Environmental Impact Assessment Scoping Report: Appendix A

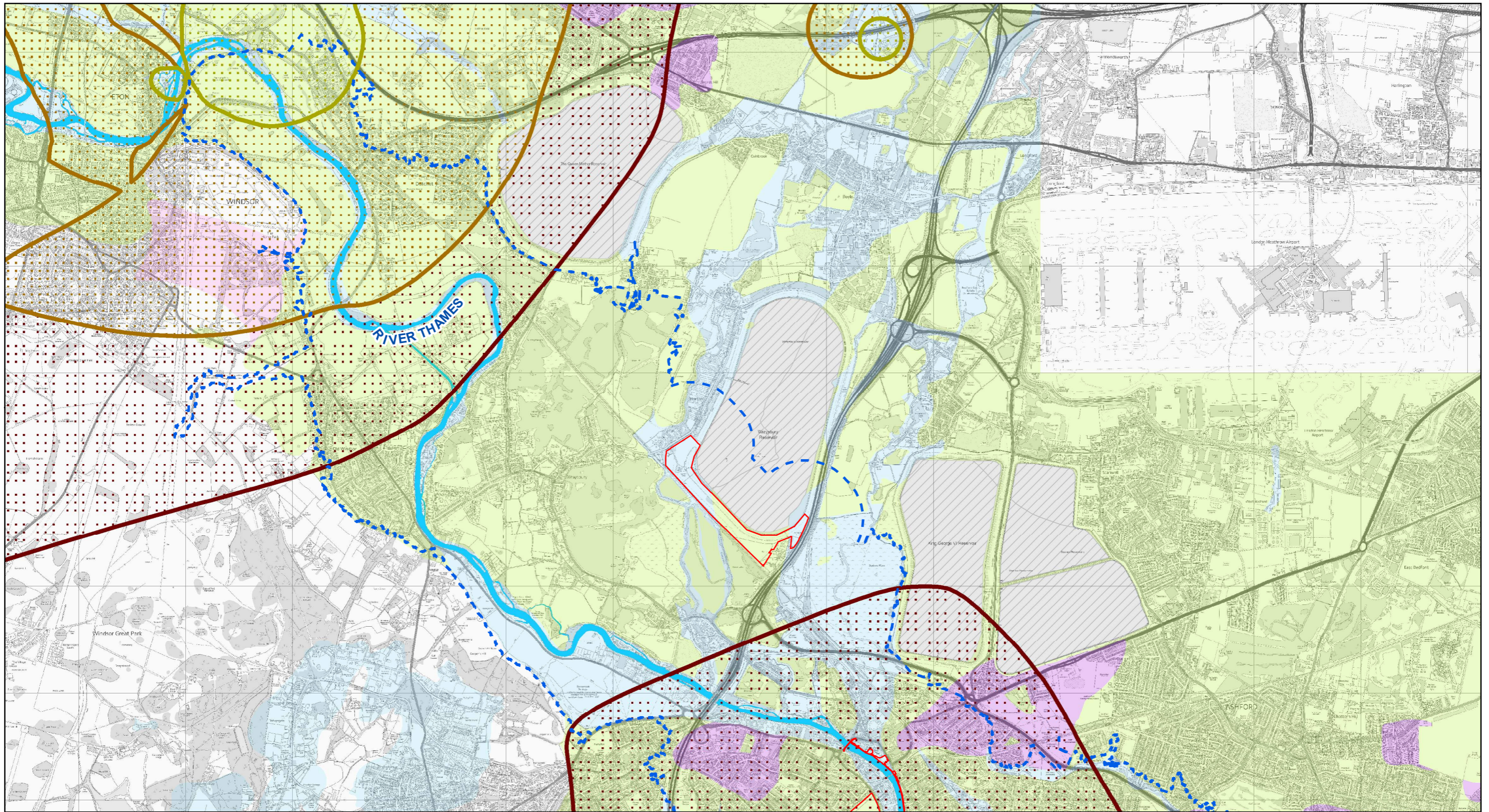
Figure 6-6	PM <sub>2.5</sub> Concentrations	1	1
<b>Biodiversity</b>			
Figure 7-1	Statutory and Non-Statutory Sites within 2km	5	1
Figure 7-2	Statutory Sites within 10km	2	1
<b>Climatic Factors</b>			
Figure 8-1	Climatic Factors Study Area	3	2
<b>Cultural Heritage, Archaeology and Built Heritage</b>			
Figure 9-1	Archaeological Potential	3	2
Figure 9-2	Heritage Assets	3	2
Figure 9-3	Archaeological Survey Stages	3	2
<b>Flood Risk</b>			
Figure 10-1	Flood Risk Zones	3	3
<b>Health</b>			
Figure 11-1	Census Wards	1	3
<b>Landscape and Visual Amenity</b>			
Figure 12-1	Existing GI Connections	3	3

Environmental Impact Assessment Scoping Report: Appendix A

Figure 12-2	Land Based Designations	6	3
Figure 12-3	Landscape Character Areas	1	3
Figure 12-4	LVIA Study Area and Viewpoints	8	3
Figure 12-5	Published Landscape Typology	1	4
<b>Materials and Waste</b>			
Figure 13-1	Materials and Waste Baseline Information	3	4
<b>Noise and Vibration</b>			
Figure 14-1	Noise Monitoring	13	4
<b>Socio-Economics</b>			
Figure 15-1	Socio-Economic receptors	3	4
Figure 15-2	Population Density	1	4
Figure 15-3	Recreational Receptors	3	5
Figure 15-4	Indices of Multiple Deprivation	1	5
<b>Soils and Land</b>			
Figure 16-1	Landfill Sites	3	5
Figure 16-2	Superficial Geology	3	5

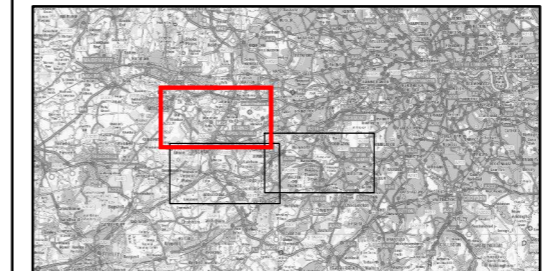
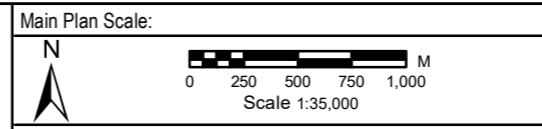
Environmental Impact Assessment Scoping Report: Appendix A

Figure 16-3	Bedrock Geology	3	5
Figure 16-4	Soilscapes	3	6
Figure 16-5	Agricultural Land Classifications	3	6
<b>Traffic and Transport</b>			
Figure 17-1	Traffic Study Area	1	6
<b>Water Environment</b>			
Figure 18-1	Surface Water bodies	3	6
Figure 18-2	Water Framework Directive Water bodies	4	6
Figure 18-3	Groundwater Water bodies	3	7



**Legend**

- PROJECT BOUNDARY FOR EIA SCOPING
- GROUNDWATER STUDY AREA FOR EIA SCOPING
- RIVER THAMES
- SOURCE PROTECTION ZONE 1
- SOURCE PROTECTION ZONE 2
- SOURCE PROTECTION ZONE 3
- SUPERFICIAL AQUIFER PRINCIPAL
- SECONDARY A
- SECONDARY (UNDIFFERENTIATED)
- UNPRODUCTIVE
- UNKNOWN



Reproduced by permission of Ordnance Survey on behalf of HMSO.  
© Crown Copyright and Database Rights 2022. Ordnance Survey Licence Number 100026380



**gb** A GALLIFORD TRY & BINNIES JOINT VENTURE  
Registered office: Cowley Business Park, Cowley, Uxbridge, Middlesex, UB8 2AL, UK  
Registered in England and Wales: Company no. 08584398

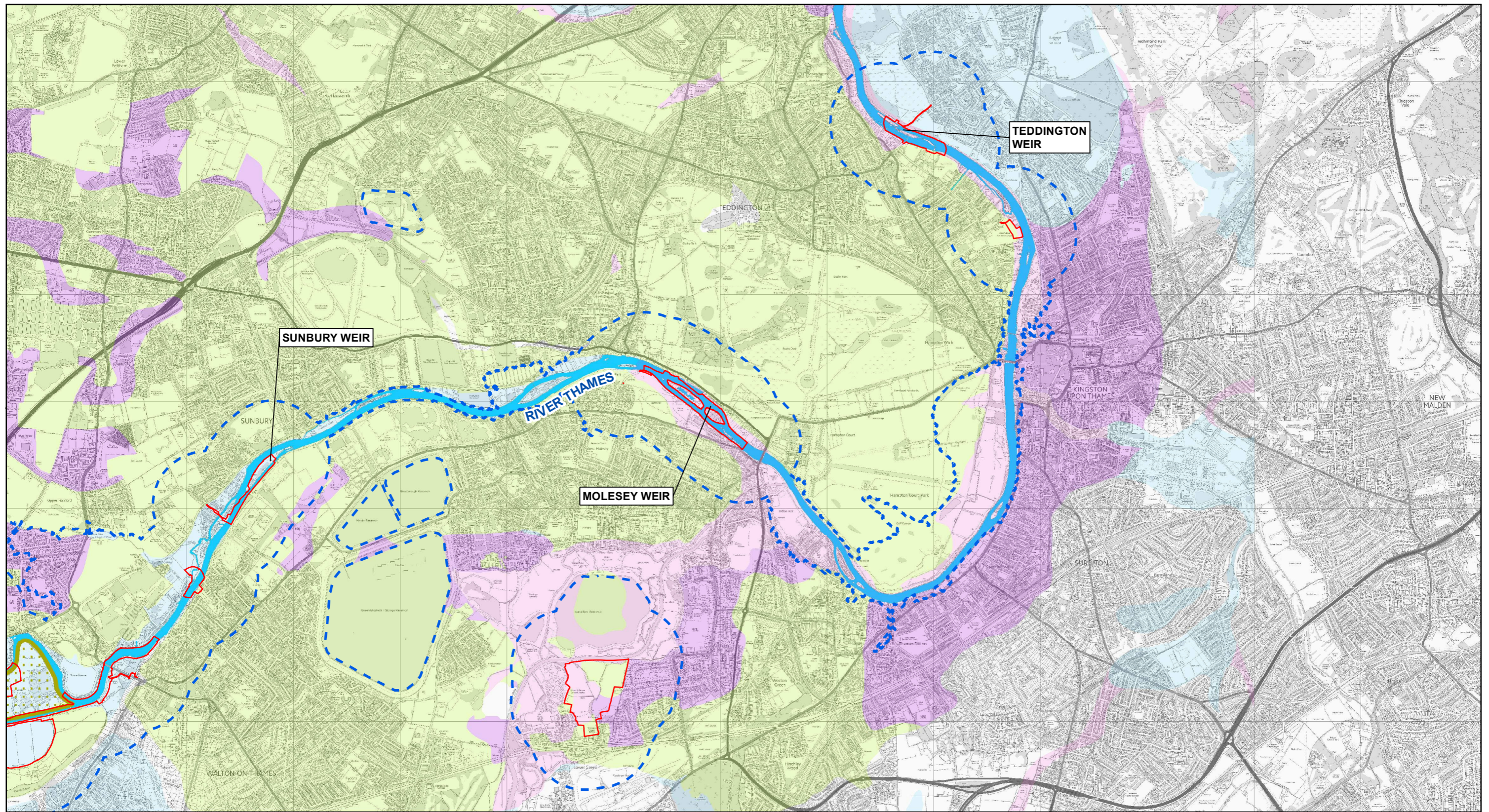
**RIVER THAMES SCHEME**

**EIA SCOPING REPORT - FIGURE 18-3: GROUNDWATER SHEET 1 OF 3**

Rev.	Drawn	Chkd	Rwrd	Apprd	Date	Description
P01	MA	CP	SC	VL	22/08/2022	FOR REVIEW AND COMMENT
P02	MA	CP	SC	VL	21/09/2022	UPDATED FOLLOWING CLIENT REVIEW
Status: S3						
Designed by: MA		Date: 08/22			Revision: P02	
Scale: 1:35,000 Project Number: 123703 Drawing Number: ENVMS500260-GBV-ZZ-3ZZ-DR-EN-10040						

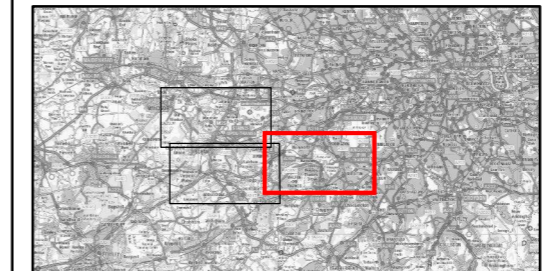
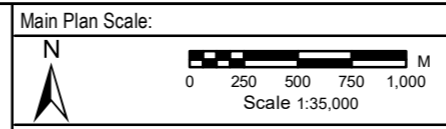
R:\Projects\2303\_RTS\_D001\Workspaces\2\_Base\_Maps\EIA\_Scoping\_Plan\ENVMSE500260-GBV-ZZ-3ZZ-DR-EN-10040.mxd Asat 18/09/22 2:08:2022





**Legend**

- PROJECT BOUNDARY FOR EIA SCOPING
- GROUNDWATER STUDY AREA FOR EIA SCOPING
- RIVER THAMES
- SOURCE PROTECTION ZONE 1
- SUPERFICIAL AQUIFER PRINCIPAL
- SECONDARY A
- SECONDARY (UNDIFFERENTIATED)
- UNPRODUCTIVE



Reproduced by permission of Ordnance Survey on behalf of HMSO.  
© Crown Copyright and Database Rights 2022. Ordnance Survey Licence Number 100026380



**gb** A GALLIFORD TRY & BINNIES JOINT VENTURE  
Registered office: Cowley Business Park, Cowley, Uxbridge, Middlesex, UB8 2AL, UK  
Registered in England and Wales: Company no. 08584398

**RIVER THAMES SCHEME**

**EIA SCOPING REPORT - FIGURE 18-3:  
GROUNDWATER  
SHEET 3 OF 3**

Rev.	Drawn	Chkd	Rwtd	Apprd	Date	Description
P01	MA	CP	SC	VL	22/08/2022	FOR REVIEW AND COMMENT
P02	MA	CP	SC	VL	21/09/2022	UPDATED FOLLOWING CLIENT REVIEW
Status: S3						
Designed by: MA		Date: 08/22			Revision: P02	
Scale: 1:35,000 Project Number: 123703 Drawing Number: ENVMS500260-GBV-ZZ-3ZZ-DR-EN-10040						